

MAXWELL ARBORETUM

FIRST TUESDAY WALKING TOURS

2019

We'll revisit old friends and make new acquaintances with recently installed plants. As always, we'll focus on looking close and following woody and herbaceous plants through their seasonal changes.

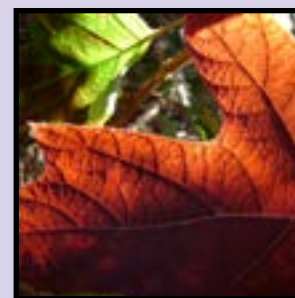
The first Tuesday of the month tour dates are:

NOON - 1:00 PM

April 2
May 7
June 4
July 2
August 6
September 3
October 1
November 5

Rain dates will be the following Tuesdays

We will meet either at the Karl Loerch Gazebo or the Perin Porch.



Find us on 

UNL Gardens
<http://unlgardens.unl.edu>

N IANR

Emily Levine is Special Projects Research Horticulturist for Community Forestry and Sustainable Landscapes, a division of the Nebraska Forest Service, and former Grounds Supervisor of Maxwell Arboretum